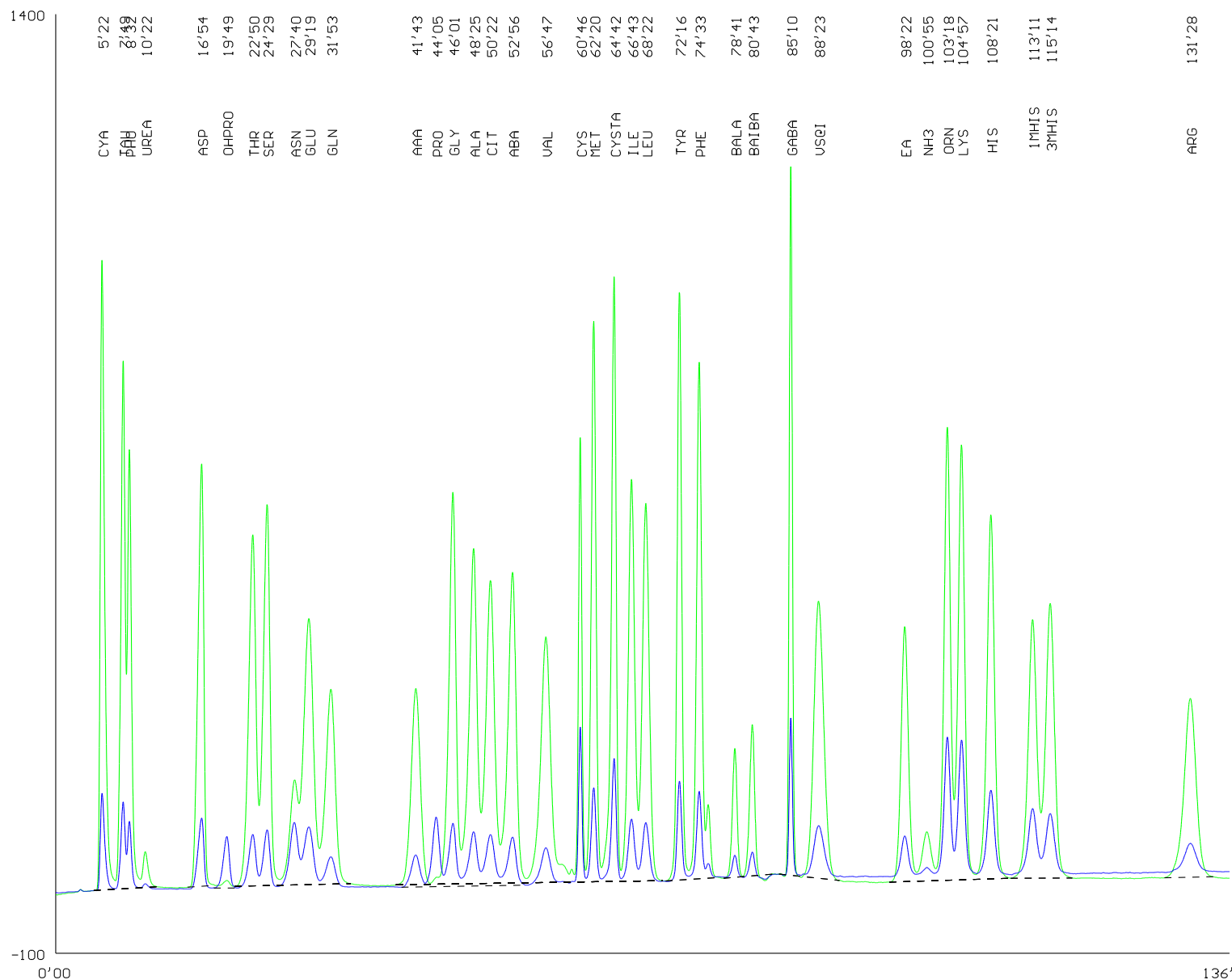


Stanovení volných aminokyselin

Standard 25 nmol



Náplň kolony: OSTION Lg FA
 Výška sloupce: 20-22 x 0.37 cm
 Teplota kolony: Viz program

Pufry:

- 1: pH 2.8 0.18 M Li⁺
- 2: pH 3.1 0.20 M Li⁺
- 3: pH 3.35 0.35 M Li⁺
- 4: pH 4.05 0.33 M Li⁺
- 5: pH 4.65 1.20 M Li⁺
- 6: 0.3 M LiOH

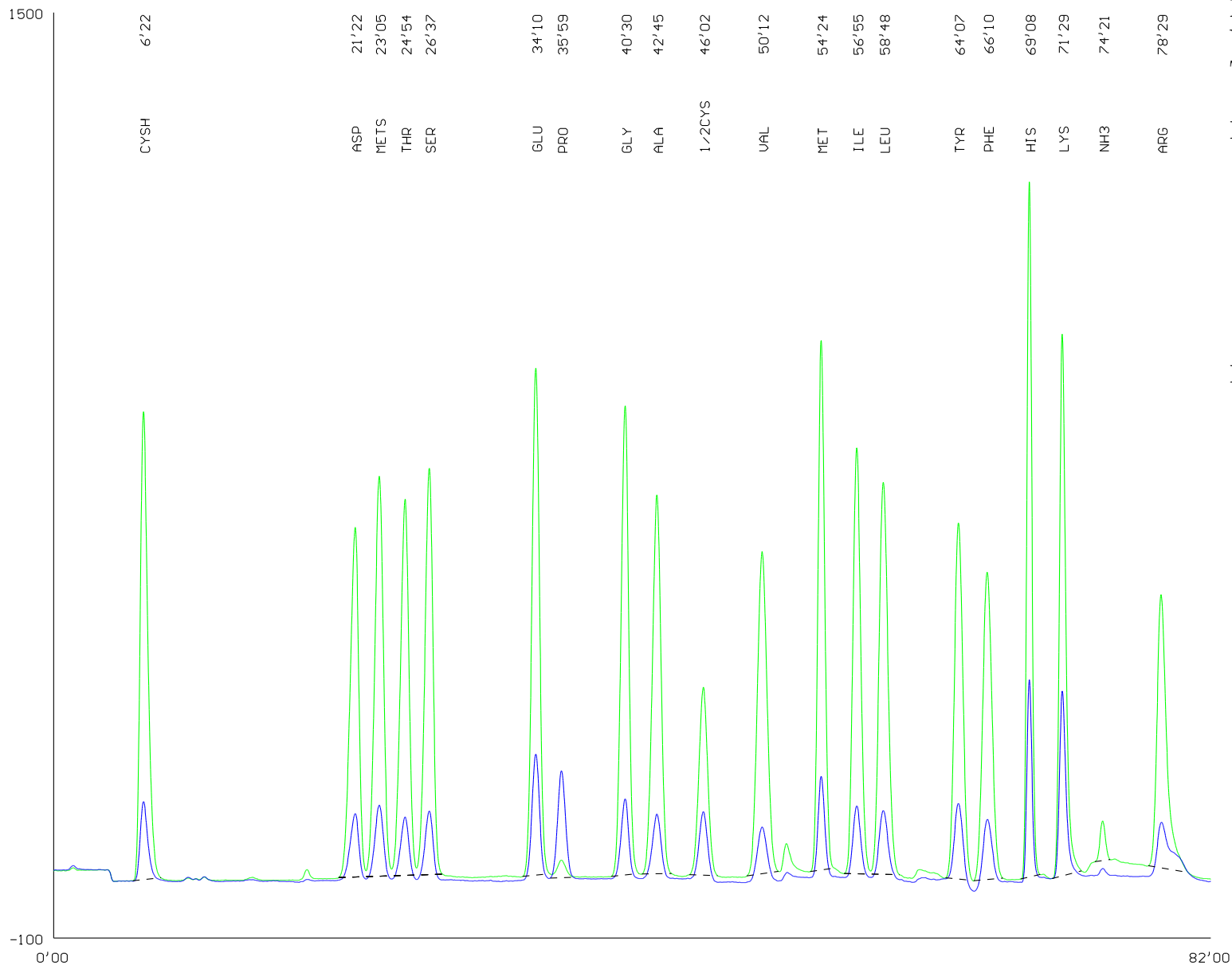
Program:

| Čas | Teplota | Pufr |
|--------|---------|------|
| 0.00 | 38.00 | 2 |
| 33.00 | 38.00 | 3 |
| 45.00 | 70.00 | 3 |
| 50.00 | 70.00 | 4 |
| 63.00 | 70.00 | 5 |
| 95.00 | 74.00 | 5 |
| 120.00 | 74.00 | 6 |
| 136.00 | 53.00 | 5 |
| 139.00 | 74.00 | 1 |
| 144.00 | 38.00 | 1 |
| 160.00 | 38.00 | 1 |

VS - chlor phenyl alanin

Analýza hydrolyzátu

Standard 25 nmol



Náplň kolony: OSTION Lg ANB

Výška sloupce: 35 x 0.37 cm

Teplota kolony: Viz program

Pufry:

1: pH 2.7 0.2 M Na⁺

2: pH 4.25 0.5 M Na⁺

3: pH 6.9 1.12 M Na⁺

4:

5:

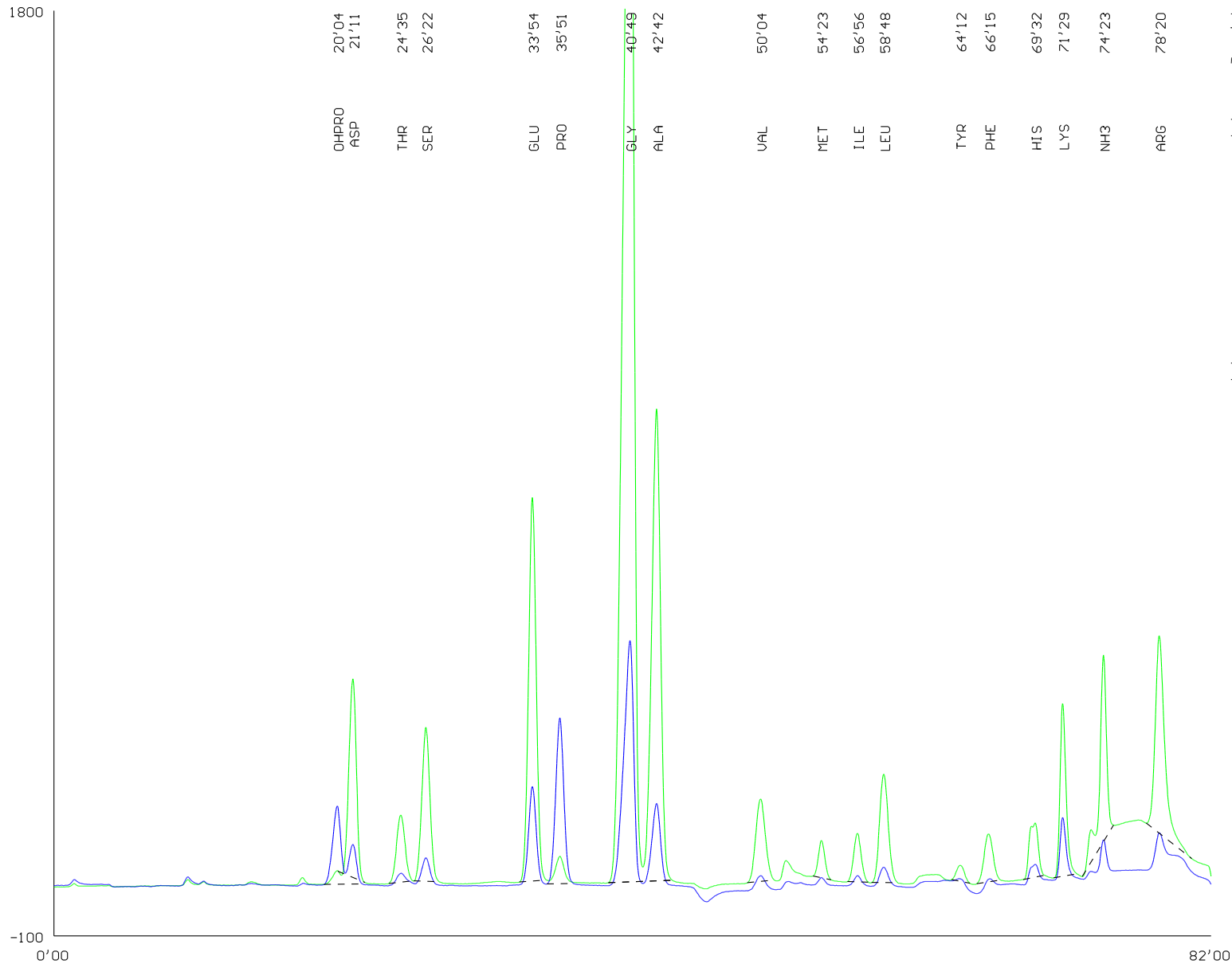
6: 0.2 M NaOH

Program:

| Čas | Teplota | Pufř |
|--------|---------|------|
| 0.00 | 50.00 | 1 |
| 1.00 | 50.00 | 4 |
| 29.00 | 50.00 | 2 |
| 44.00 | 60.00 | 3 |
| 63.00 | 74.00 | 3 |
| 66.00 | 74.00 | 6 |
| 71.00 | 74.00 | 1 |
| 77.00 | 60.00 | 1 |
| 82.00 | 53.00 | 1 |
| 87.00 | 50.00 | 1 |
| 101.00 | 50.00 | 1 |

Analýza hydrolyzátu

Hydrolyzát želatiny



Náplň kolony: OSTION Lg ANB

Výška sloupce: 35 x 0.37 cm

Teplota kolony: Viz program

Pufry:

1: pH 2.7 0.2 M Na⁺

2: pH 4.25 0.5 M Na⁺

3: pH 6.9 1.12 M Na⁺

4:

5:

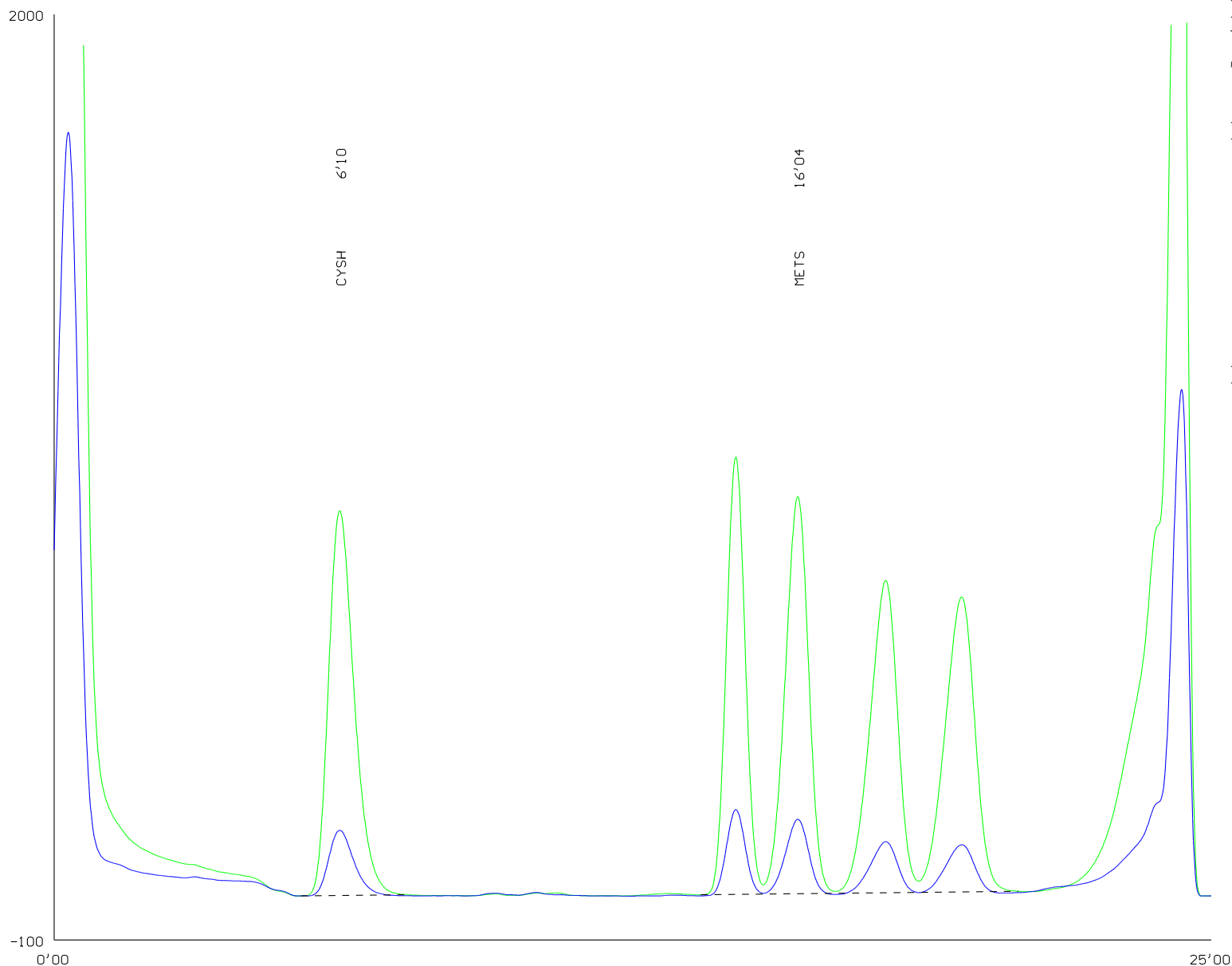
6: 0.2 M NaOH

Program:

| Čas | Teplota | Pufr |
|--------|---------|------|
| 0.00 | 50.00 | 1 |
| 1.00 | 50.00 | 4 |
| 29.00 | 50.00 | 2 |
| 44.00 | 60.00 | 3 |
| 63.00 | 74.00 | 3 |
| 66.00 | 74.00 | 6 |
| 71.00 | 74.00 | 1 |
| 77.00 | 60.00 | 1 |
| 82.00 | 53.00 | 1 |
| 87.00 | 50.00 | 1 |
| 101.00 | 50.00 | 1 |

Zkrácená analýza sirných aminokyselin

Standard 25 nmol



Náplň kolony: OSTION Lg ANB
Výška sloupce: 35 x 0.37 cm
Teplota kolony: Viz program

Pufry:

- 1: pH 2.7 0.2 M Na⁺
- 2:
- 3:
- 4:
- 5:
- 6: 0.2 M NaOH

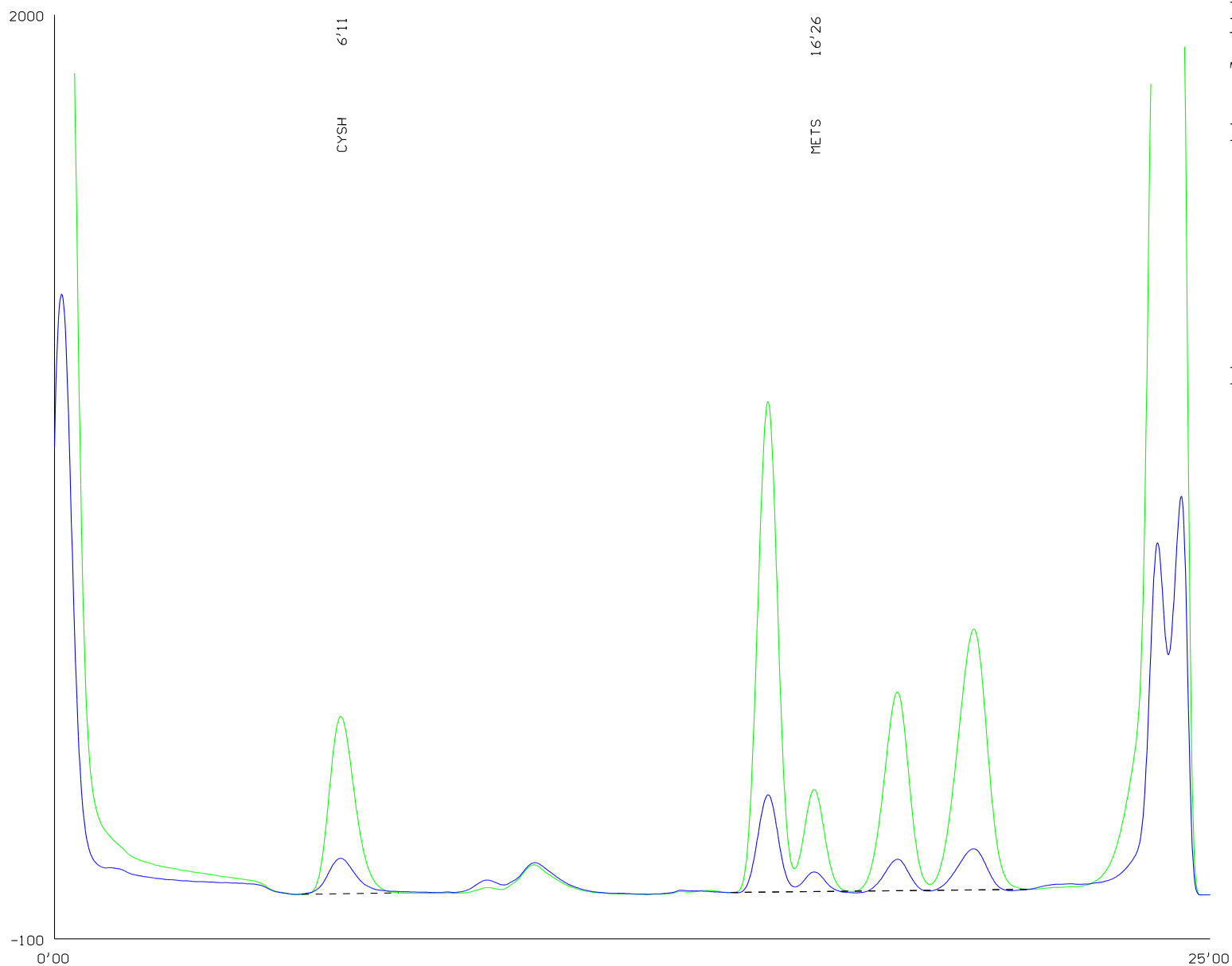
Program:

| Čas | Teplota | Pufr |
|-------|---------|------|
| 0.00 | 60.00 | 1 |
| 3.00 | 60.00 | 6 |
| 8.00 | 60.00 | 1 |
| 25.00 | 60.00 | 1 |

Zkrácená analýza sirných aminokyselin



Oxidativní hydrolyzát krmné směsi



Náplň kolony: OSTION Lg ANB
Výška sloupce: 35 x 0.37 cm
Teplota kolony: Viz program

Pufry:

- 1: pH 2.7 0.2 M Na⁺
- 2:
- 3:
- 4:
- 5:
- 6: 0.2 M NaOH

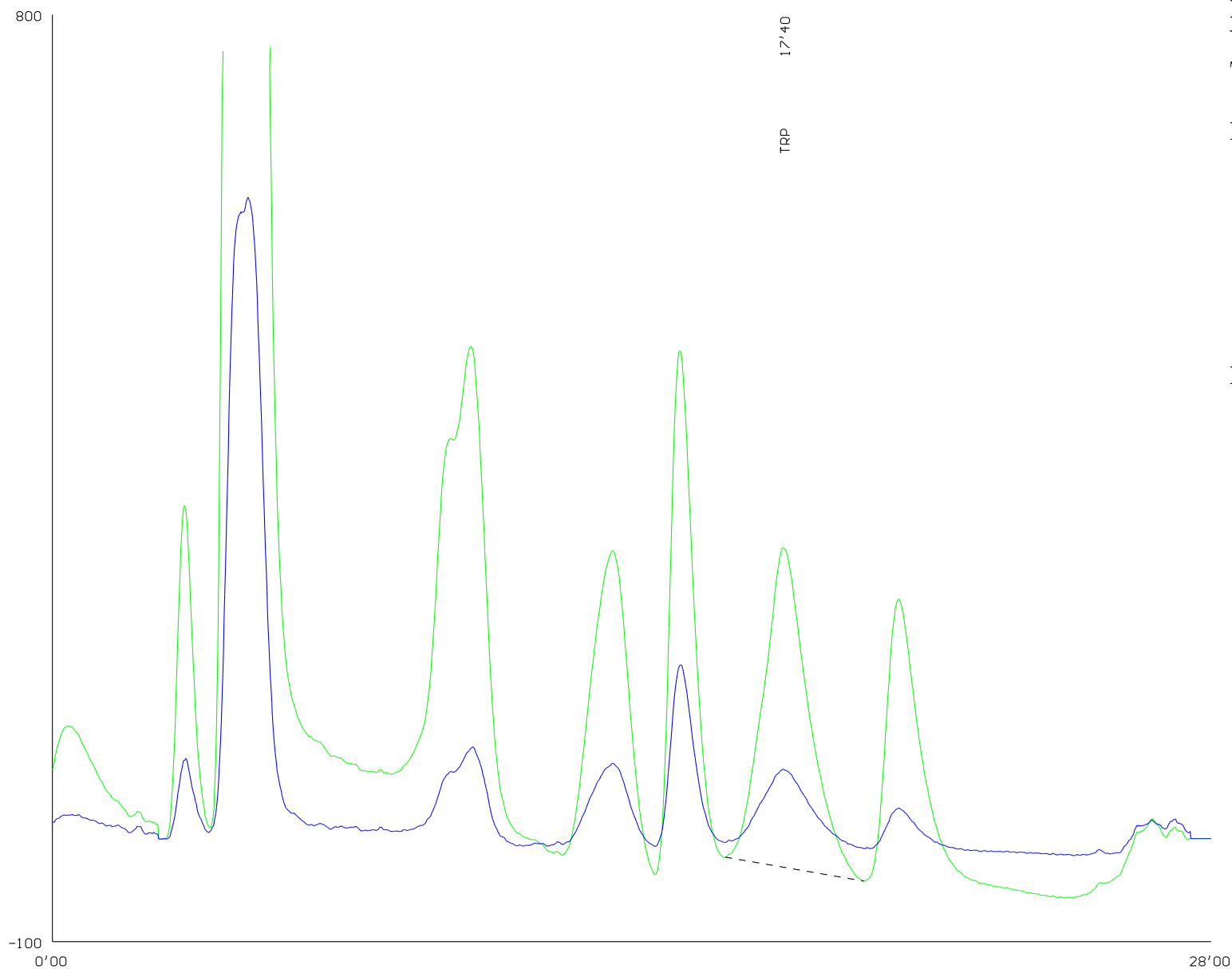
Program:

| Čas | Teplota | Pufr |
|-------|---------|------|
| 0.00 | 60.00 | 1 |
| 3.00 | 60.00 | 6 |
| 8.00 | 60.00 | 1 |
| 25.00 | 60.00 | 1 |

Zrychlené stanovení TRP na zkrácené koloně



Standard 25 nmol



Náplň kolony: OSTION Lg ANB
Výška sloupce: 10 x 0.37 cm
Teplota kolony: Viz program

Pufry:

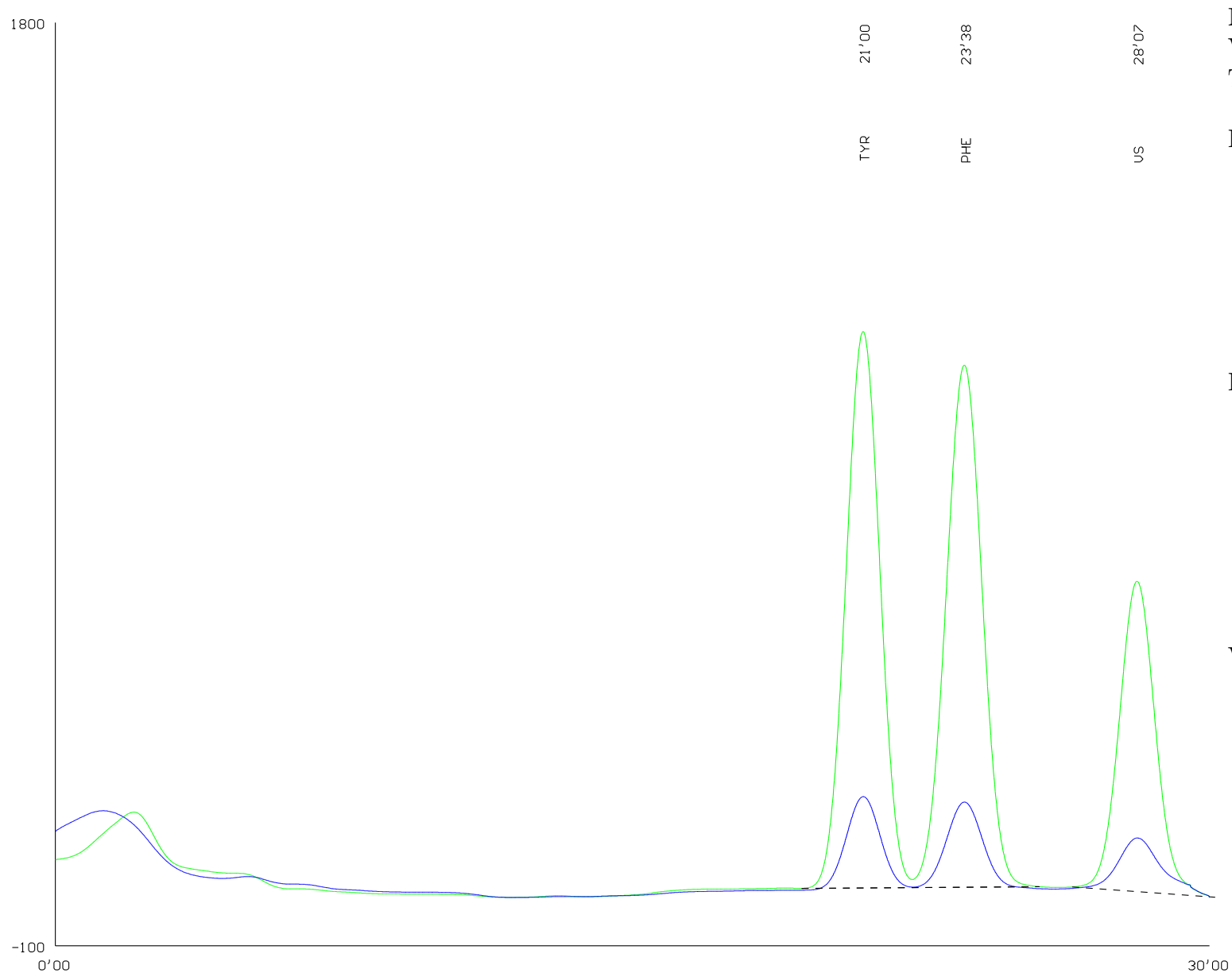
- 1: pH 2.7 0.2 M Na⁺
- 2:
- 3: pH 6.9 1.12 M Na⁺
- 4:
- 5: 0.4 M Na⁺
- 6: 0.2 M NaOH

Program:

| Čas | Teplota | Pufř |
|-------|---------|------|
| 0.00 | 50.00 | 3 |
| 2.30 | 52.00 | 3 |
| 13.00 | 52.00 | 6 |
| 18.00 | 52.00 | 1 |
| 24.00 | 52.00 | 5 |
| 28.00 | 52.00 | 5 |

Zkrácené stanovení tyr, phe s použitím vnitřního standardu

Standard 25 nmol



Náplň kolony: OSTION Lg FA
Výška sloupce: 20-22 x 0.37 cm
Teplota kolony: Viz program

Pufry:

- 1: pH 2.8 0.18 M Li⁺
- 2:
- 3: pH 3.35 0.35 M Li⁺
- 4: pH 4.05 0.33 M Li⁺
- 5:
- 6: 0.3 M LiOH

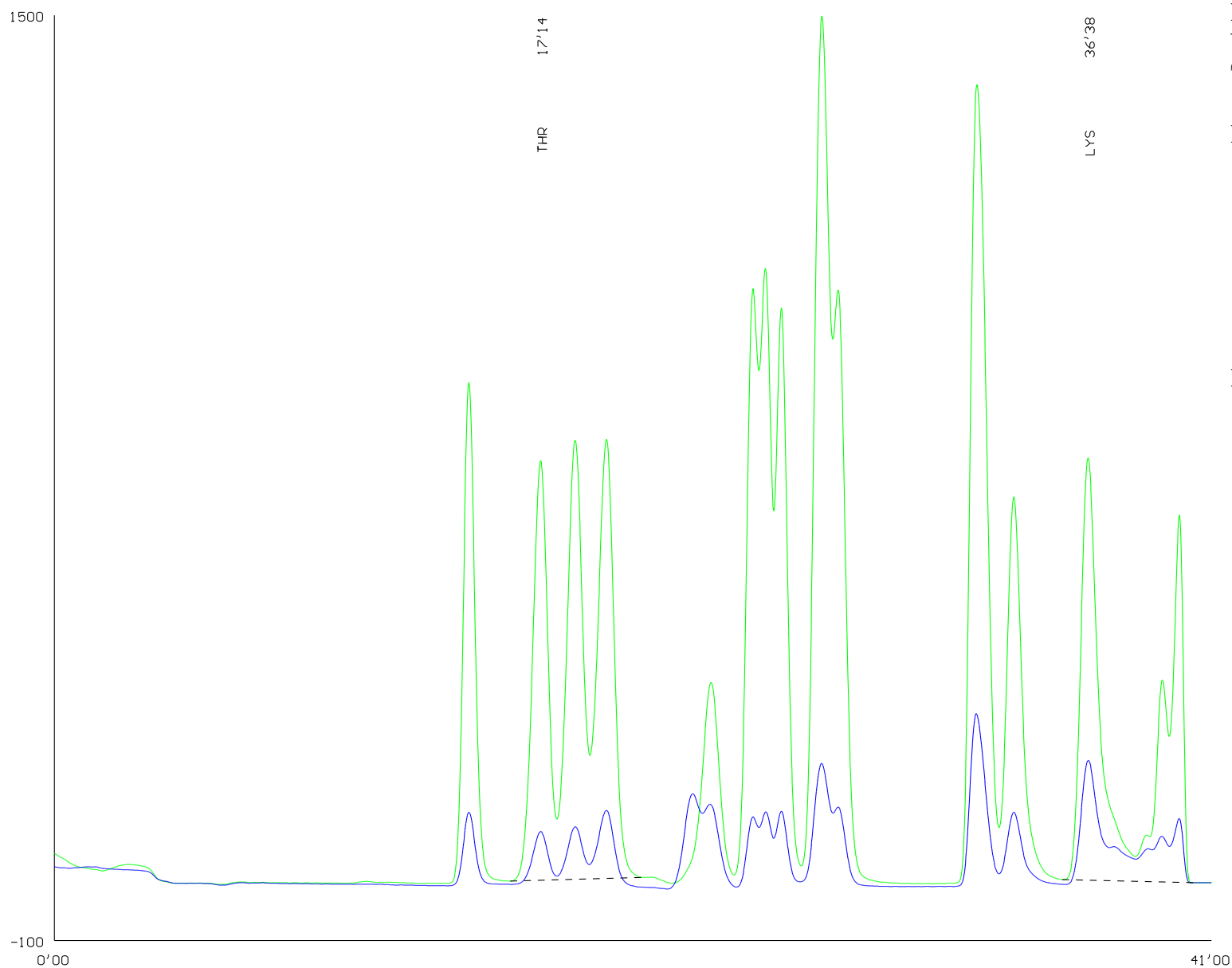
Program:

| Čas | Teplota | Pufr |
|-------|---------|------|
| 0.00 | 60.00 | 4 |
| 12.00 | 70.00 | 4 |
| 13.00 | 70.00 | 6 |
| 18.00 | 70.00 | 1 |
| 21.00 | 60.00 | 3 |
| 30.00 | 60.00 | 3 |

VS - chlor phenyl alanin

Zkrácené stanovení thr, lys

Standard 25 nmol



Náplň kolony: OSTION Lg ANB
Výška sloupce: 35 x 0.37 cm
Teplota kolony: Viz program

Pufry:

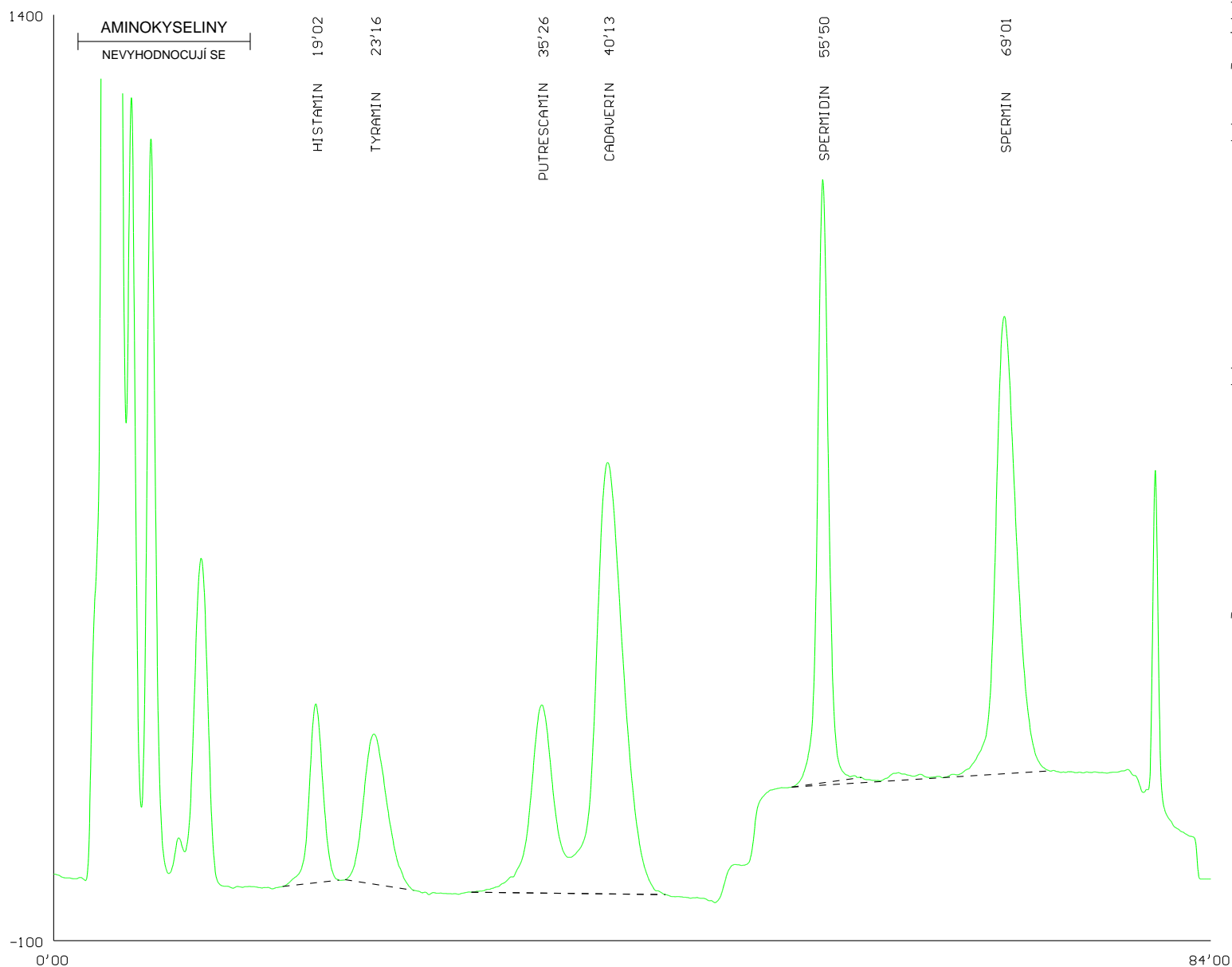
- 1: pH 2.7 0.2 M Na⁺
- 2: pH 4.25 0.5 M Na⁺
- 3: pH 6.9 1.12 M Na⁺
- 4: pH 3.0
- 5:
- 6: 0.2 M NaOH

Program:

| Čas | Teplota | Pufr |
|-------|---------|------|
| 0.00 | 53.00 | 4 |
| 4.00 | 60.00 | 2 |
| 8.00 | 60.00 | 3 |
| 20.00 | 68.00 | 3 |
| 22.00 | 68.00 | 6 |
| 24.00 | 68.00 | 4 |
| 36.00 | 60.00 | 4 |
| 41.00 | 53.00 | 4 |

Stanovení biogenních aminů

Standard 25 nmol



Náplň kolony: OSTION Lg ANB
Výška sloupce: 5.5-7 x 0.37 cm
Teplota kolony: Viz program

Pufry:

- 1: Viz tabulka
- 2: Viz tabulka
- 3:
- 4:
- 5:
- 6: 0.2 M NaOH

Program:

| Čas | Teplota | Pufr |
|-------|---------|------|
| 0.00 | 60.00 | 1 |
| 48.00 | 60.00 | 2 |
| 74.00 | 60.00 | 6 |
| 79.00 | 60.00 | 1 |
| 94.00 | 60.00 | 1 |

Tabulka:

| Pufr | 1 | 2 |
|--------------------|---------|---------|
| Kyselina citronová | 1,05g | 14,0g |
| Citronan sodný | 21,0g | - |
| Chlorid sodný | 5,0 g | - |
| Chlorid draselný | - | 171,5 g |
| Bromid draselný | 41,65g | - |
| Hydroxid draselný | - | 10,0ml |
| Isopropanol | 250,0ml | - |
| Konečný objem | 1000 ml | 1000 ml |